



BIVAR

Panel Mount Indicators Metal, Plastic

Q-FLEX

www.q-flex.fi info@q-flex.fi
+358 2 4894 500

www.bivar.com 

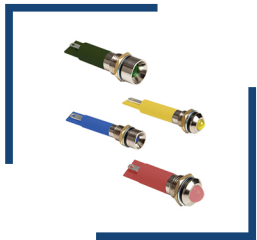
Standard and Rugged Configurations

Bivar Panel Mount Indicators continue evolving, providing the latest technology innovation along with immense visibility, and long-lasting quality. Well-engineered durable indication with expert design support to tailor products into a custom application or complete system design. Rugged products up to IP68 rating that stand up to all types of harsh environments.



Metal

- Chrome panel mount 3mm or 5mm lens available in domed or recessed profile.
- High quality single or bi-color Bivar LED with water clear, diffused, and tinted lens options.
- Threaded retention base with option for 24awg wires. Hardware included.
- Range of voltage options from 2.4V to 12V.



Metal IP Rated

- Chrome panel mount 3mm or 5mm lens available in domed or recessed profile.
- IP54 Rated diffused appearance lens with high quality single color Bivar LED.
- Threaded retention base with quick-connect blade terminals. Hardware included.
- Range of voltage options: 12V, 24V, 110V, 220V.



Plastic

- Plastic panel mount 3mm or 5mm lens available in domed or low profile.
- High quality single or bi-color Bivar LED with water clear, diffused, or tinted lens options.
- Threaded retention base with option for 24awg wires. Hardware included.
- Range of voltage options from 2.0V to 12V.



Plastic IP Rated

- Plastic panel mount 3mm or 5mm lens available in domed or low profile.
- IP67 Rated diffused, smoked, Fresnel appearance lens with high quality single color Bivar LED.
- Threaded retention base with option for 24awg wires. Hardware included.
- Range of voltage options from 12V, 24-28VDC, 8-48VDC, 110V AC/DC .

Bivar Advantage

Bivar's Engineering Team has designed these products to ensure the highest quality panel mount indicators are available to any design engineers looking to implement our product into their application while guaranteeing satisfaction in operation and performance.



Technology

Bivar applies proven LED indication quality and reliability with the incorporation of sensors to lead the way with Panel Mount Indicators. Automated control ambient light output for brighter daylight applications that improve safety and status communication.



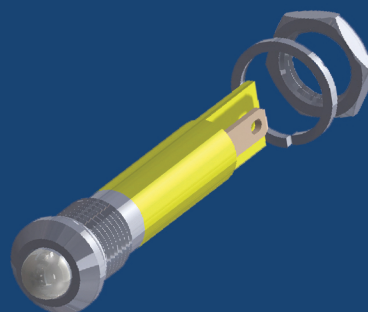
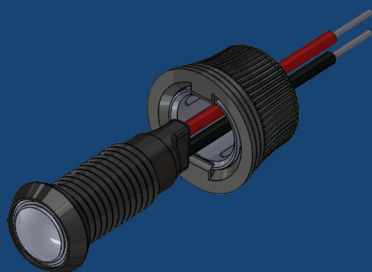
Selection


Bivar Panel Mount Indicators are used by customers around the world who rely upon their range of options to meet local operating requirements. Readily available from Bivar Authorized distributors, they are highly configurable and easily modified to meet customer specifications as required.


LED Advanced Solutions

Bivar's Advanced Solutions Team works closely with customers to thoroughly assess, problem-solve, and present custom design options that best achieve the intended performance, while exceeding customer's expectation. Each custom solution is tailored to their unique requirements, ensuring long-life span and usage in all critical applications.

[Contact a Design Expert today!](#)





4 Thomas, Irvine, CA 92618 USA
1.949.951.8808  www.bivar.com

BIVAR